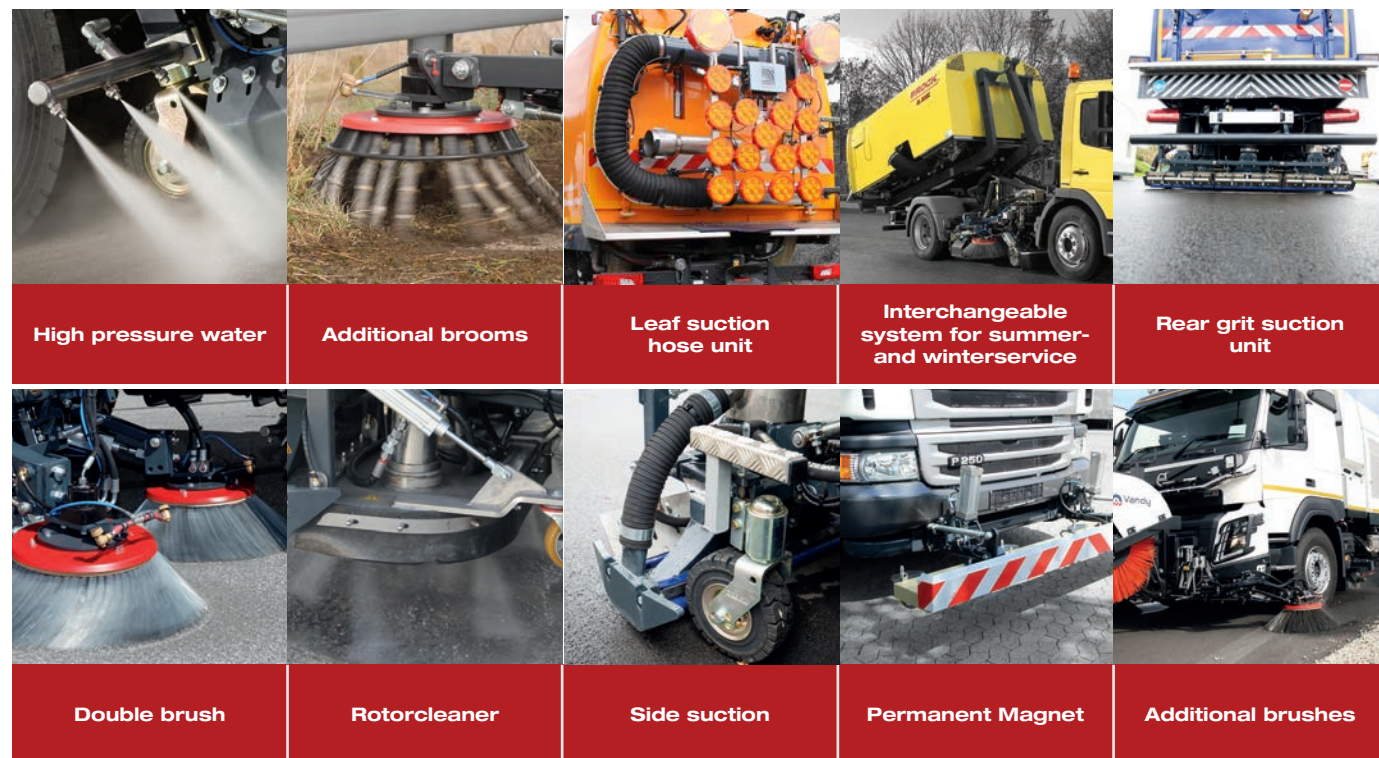


## ADDITIONAL EQUIPMENT

MAKES YOUR MACHINE AN UNBEATABLE CLEANING PROFESSIONAL

Thanks to our modular system, your machine becomes an unbeatable cleaning professional. Here you will find a small selection of possibilities:



And further options, depending on the configuration. Contact us!

## BROCK WORLDWIDE

You can find BROCK dealers in the following countries:

Austria, Bangladesh, Belgium, Bengal, Bosnia and Herzegovina, Chile, China, Colombia, Croatia, Czech Republic, Denmark, Egypt, Estonia, Finland, France, Germany, Greece, India, Israel, Italy, Kazakhstan, Luxembourg, Myanmar, Nepal, Netherlands, North Macedonia, Norway, Panama, Paraguay, Peru, Philippines, Poland, Portugal, Russia, Saudi Arabia, Serbia, Slovakia, Spain, Sweden, Thailand, Ukraine, Uruguay, Uzbekistan, United Arab Emirates, Vietnam.

For the exact contact persons, please visit [www.brock-kehrtechnik.de](http://www.brock-kehrtechnik.de)

## CONTACT

**BROCK Kehrtechnik GmbH**  
Arnoldschacht 14  
D-44894 Bochum

Tel.: +49 234 - 911 74 - 0  
Fax: +49 234 - 911 74 - 293  
E-Mail: [sales@brock-kehrtechnik.de](mailto:sales@brock-kehrtechnik.de)

[www.brock-kehrtechnik.de](http://www.brock-kehrtechnik.de)

[facebook.com/brockkehrtechnik](https://facebook.com/brockkehrtechnik)  
[youtube.com/brockkehrtechnik](https://youtube.com/brockkehrtechnik)  
[instagram.com/brockkehrtechnik](https://instagram.com/brockkehrtechnik)  
[de.linkedin.com/company/brock-kehrtechnik-gmbh](https://de.linkedin.com/company/brock-kehrtechnik-gmbh)



## ONLINE BROCHURE

SIMPLY SCAN QR-CODE

Scan the QR code and go directly to the product page with more photos and videos.



LARGE ROAD SWEEPER

08/2023



# VS6

APPROVED IN MUNICIPALITIES



COMPACT. AGILE. SUCTION POWER.





# VS6

6 m<sup>3</sup> + 1,200 l

2,500 mm to 5,050 mm



INNOVATIVE  
SWEEPING TECHNOLOGY  
MADE IN GERMANY

## THE MUNICIPAL COMPREHENSIVE SWEEPER

With its 6 m<sup>3</sup> dirt container volume, the VS6 is one of the smaller large road sweepers. Like its larger versions, the VS6 is also extremely powerful and versatile. The BROCK modular system makes it possible to equip and convert them for both summer and winter service.

Large sweepers from BROCK Kehrtechnik GmbH are innovative sweeper units made in Germany paired with the customers' favourite chassis types. **Efficient, modern drive concepts form the interface between the chassis and sweeper body.** The sweeper unit can be driven, for example, by an additional superstructure engine according to country-specific exhaust emission standards or a hydrostatic drive that allows the machine to run at an optimum sweeping speed.

**The sweeping units are just as freely selectable as the type of drive.**

Adapted to their future areas of application, the robustly designed sweeping unit types can be freely selected and assembled from the BROCK modular system.

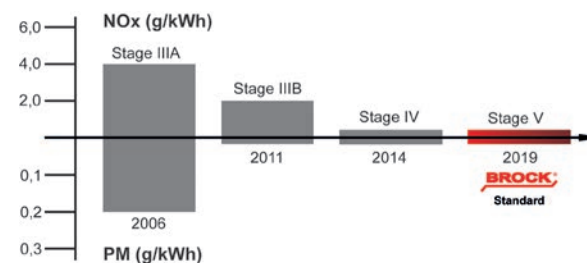
**Whether double plate broom on one side or single plate broom on both sides?** The modular principle offers a multitude of possibilities. Can both be configured according to performance and cleaning task.

**100% ELECTRICAL**



Also available as  
**VS6e 100% electric!**  
Please contact us!

## TRENDSETTING



**Modern drive concepts** guarantee that the strict emission guidelines of the European Union are met and ensure **clean streets and less pollution for humans and the environment.**

## DIVERSE VERSIONS

### SWEEPER UNIT

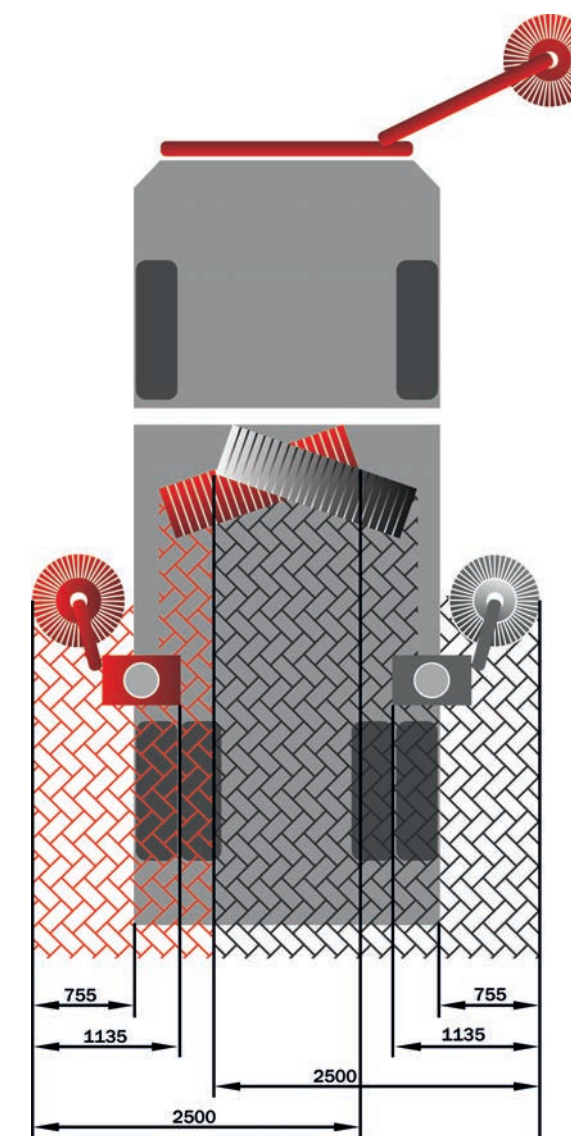
Auxiliary engine	•
PTO	•
Hydrostat (only with a manual gearbox)	•
100% electric	•

### CHASSIS

Automatic	•
Manual	•
Plug-In Hybrid	•
100% electric	•

## SWEEPING WIDTHS

Depending on the additional equipment, a sweeping or washing width of 2,500 mm to 5,050 mm is possible.



Standard configurations are marked in grey.



**Your sweeper as individual as you are - that is our strength.** We find the perfect solution for your cleaning work. With a multitude of possibilities and variations, your machine becomes the ultimate cleaning professional. Please contact us or write to us: [sales@brock-kehrtechnik.de](mailto:sales@brock-kehrtechnik.de)

**We reserve the right to make technical changes.** Product photos may include special solutions and additional equipment.